

# SUSTAINABILITY INITIATIVES IN FRENCH HOSPITALS

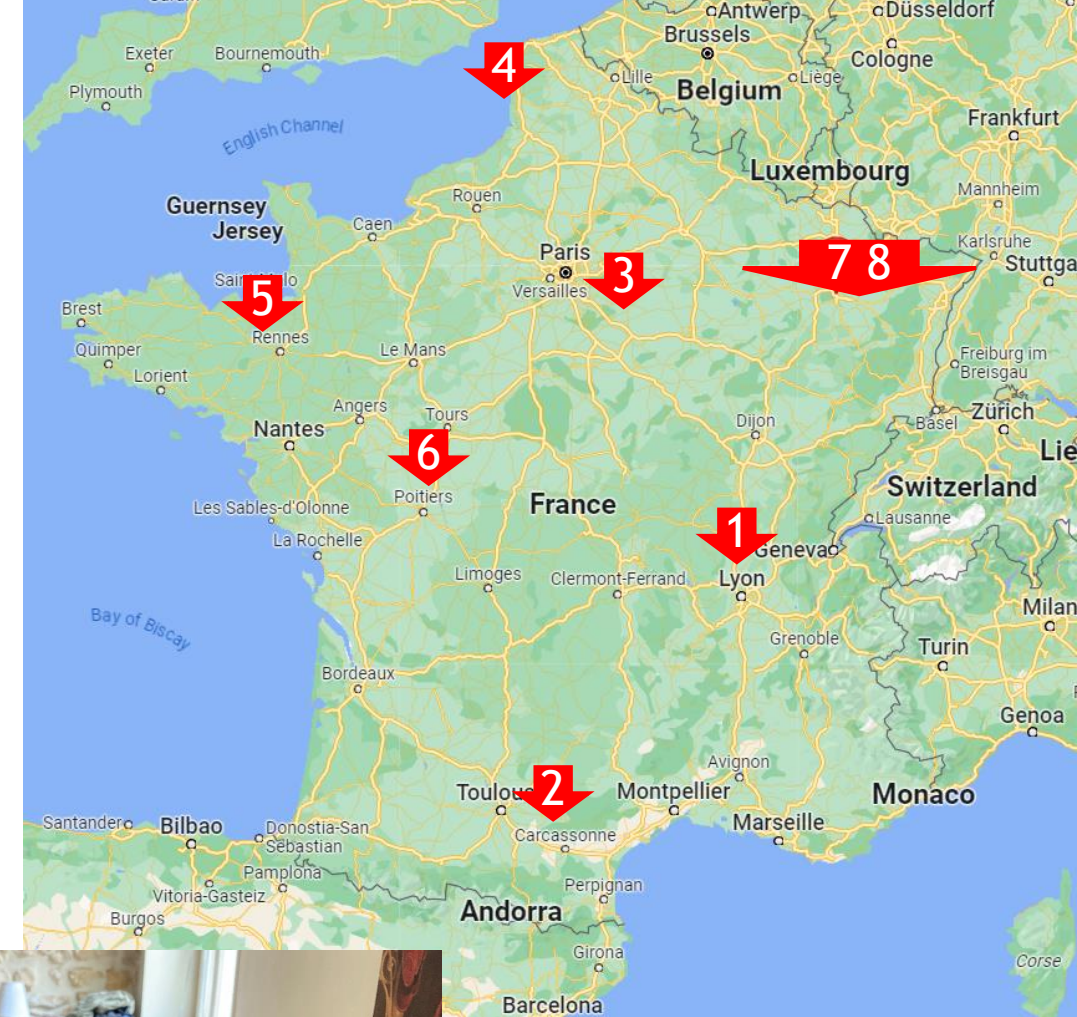


hope

European Hospital and  
Healthcare Federation

## 8 participants in France:

1. Sandrine Balon (Belgium) - Givors
2. Rosa Trotta (Belgium) - Carcassonne
3. Luca Iodice (Italy) - Melun
4. Beatrice Pevarello (Italy) - Boulogne-sur-mer
5. Michael Spalek (Austria) - Rennes
6. Mila Larrayoz Dutrey (Spain) - Poitiers
7. Iro Tsara (Greece) - Nancy
8. Hester Wain (UK) - Nancy





# INTRODUCTION

- ▶ In French law there is the obligation to reduce the energy consumption for the entire tertiary sector: «Décret tertiaire».
- ▶ **EGAlim law** : sets objectives for public and private collective catering to enable the transition to quality and sustainable food.



©1989-2023 APM International - [https://www.apmnews.com/story.php?objet=396516&idmail=.0.oQ4xQ03Sib7LrDKvHBQowJr\\_rIGbFdq6cc-tjxWY0JPCpFNUp1eyt\\_6RyJpir2LJnPbZkj1KS9OB7BjOzUluBTQPb0lohZ5-JvE01HTE00kUzZTKZTeaOxFoiY1skyAenzcalHkiEKw4HiMlpdNu3c74aD\\_8un69-cUncVPLaXFktj0aVkobKAaCISGSmqSzqp-arli1Efqcidi4Cpme0obnYIC-jEXLLsytrYDM\\_g8](https://www.apmnews.com/story.php?objet=396516&idmail=.0.oQ4xQ03Sib7LrDKvHBQowJr_rIGbFdq6cc-tjxWY0JPCpFNUp1eyt_6RyJpir2LJnPbZkj1KS9OB7BjOzUluBTQPb0lohZ5-JvE01HTE00kUzZTKZTeaOxFoiY1skyAenzcalHkiEKw4HiMlpdNu3c74aD_8un69-cUncVPLaXFktj0aVkobKAaCISGSmqSzqp-arli1Efqcidi4Cpme0obnYIC-jEXLLsytrYDM_g8)

DÉPÊCHE - Actualisation le Mardi 23 mai 2023 - 16:36

**Le secteur de la santé devra réduire de 5%  
par an ses émissions de gaz à effet de serre  
jusqu'en 2050 (actualisation)**



# ENERGY AND ECOLOGY ADVISORS TO ENABLE SUSTAINABILITY TRANSITIONS IN HEALTHCARE

New profession to support the ecological and energy transition in health



M. Rémi NIEUWLANDT -  
CTEES du GHT Côte d'Opale

Since 2021, to put advisors in place to undertake:

- energy audits
- initiate action plans to reduce energy consumption and improve air quality
- develop tools and recommendations to limit pollution
- 50 people now in place

# CARBON FOOTPRINT



facilities

waste



2%

energy



6%

drugs and medical devices



11%

29%

transport - staff

49 tons CO<sub>2</sub> per bed

13%

24%



15%

other purchasing and services

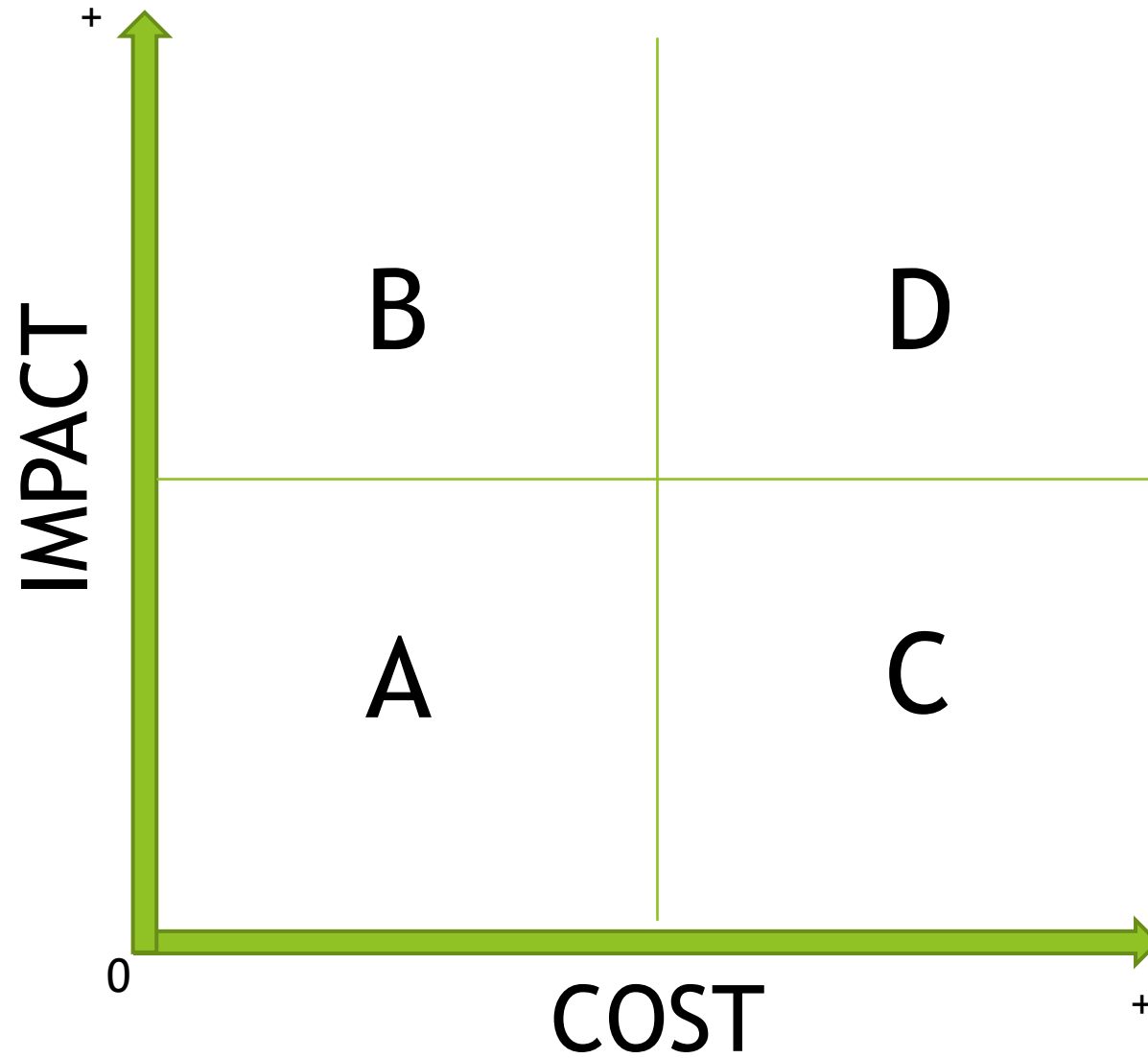
transport - patients and visitors



Rennes University Hospital, 2019



# SELECTION CRITERIA





# Example 1 - cat. D

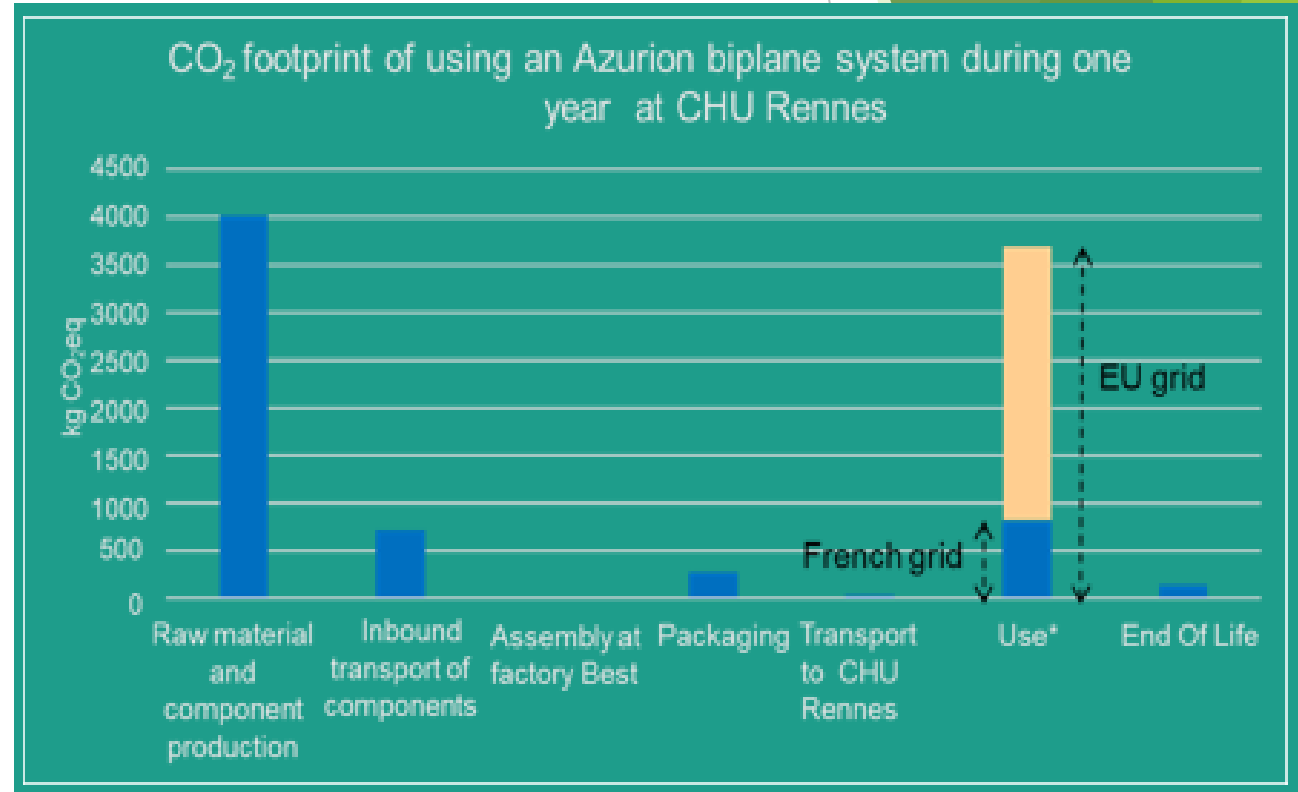
## LIFE CYCLE ASSESSMENT OF AN IMAGE-GUIDED THERAPY SYSTEM

- Biplane system for neurological interventions installed at Rennes University Hospital stroke center
- Life cycle assessment methodology: EU harmonized Product Environment Footprint (PEF - EF3.0) intended, had to switch to ISO standard (ISO 14040/14044)
- Results currently under audit by an independent third-party



# LIFE CYCLE ASSESSMENT RESULTS

- The image-guided therapy-system contributes to **6 tons of CO<sub>2</sub> per year** ~ annual CO<sub>2</sub> footprint of 1.3 citizens
- **Use phase has relatively low impact** due to large share of nuclear power in French energy mix: ~4.5 times more CO<sub>2</sub> emissions with EU grid average
- Potential to save energy by powering down the system to **standby mode** during non-working hours
- **Life time extension** via circular updates and refurbishment from 10 to 20 years will **reduce carbon footprint by 40 %**
- **Next step:** analysis of the entire system





# Example 2 - cat. B WASTE RECOVERY

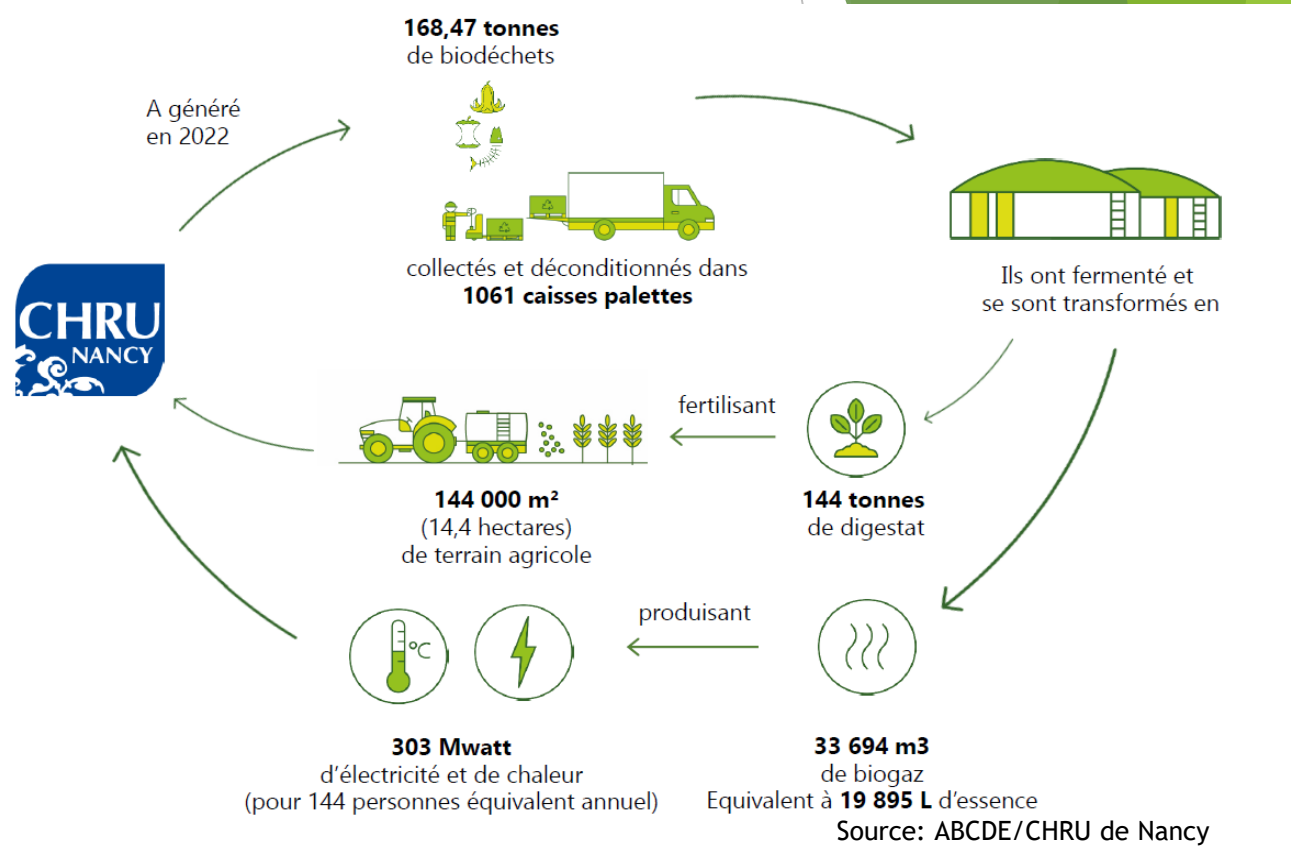
## ► CH Boulogne-sur-mer

New machine uses the water from the boiler room for washing the drapes and scrubs etc.

## ► CHRU Nancy

Waste food recycled via the Bio-plant to produce fertiliser for local farmers and biogas for use by the hospital and the city

ABCDE  
GROUPE



# Example 3 - cat. B

## MATERNITY CHARTER FOR ECO-RESPONSIBILITY

- ▶ breast feeding
- ▶ recycling baby feeding bottles
- ▶ nappies in tote bags
- ▶ provision of water in jugs
- ▶ wellbeing and eco-friendly care (e.g. locally produced soap)



**Preparing future generations!**

**CHARTRE DE LA MATERNITÉ ECO-RESPONSABLE**  
NOUS NOUS ENGAGEONS DANS LA PRÉVENTION ET LA PROTECTION DE LA SANTÉ DES GÉNÉRATIONS ACTUELLES ET FUTURES

- Allaitement maternel**  
Toute notre équipe est à votre écoute pour vous accompagner et répondre à vos questions sur l'allaitement maternel.
- Recyclage des biberons**  
Tous les biberons utilisés dans la maternité sont triés et recyclés. Aidez-nous à les récupérer !
- Couches et tête-bag**  
Lors de votre séjour, des couches distribuées prennent en compte des critères sans perturbateurs endocriniens. Elles vous sont remises dans un tête-bag pour limiter les emballages en plastique.
- Eau en carafe**  
N'hésitez pas à vous en servir ! Pour limiter l'utilisation du plastique, nous avons supprimé les bouteilles d'eau distribuées dans notre maternité. Les carafes sont nettoyées tous les jours.
- Bien-être et éco-soins**  
Parce que le bien être est essentiel, nous intégrons l'éco-conception des soins dans la pratique de la maternité. Pour prendre soin de nos nouveau-nés, nous avons choisi un savon fabriqué en France et sans perturbateurs endocriniens.

CH Carcassonne

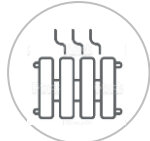
# ECO-ACTIONS FOR EACH PROFESSIONAL



I switch off the lights, my computer and equipment



I improve my digital carbon footprint



I don't use heating unnecessarily



I monitor my water consumption and report water leaks



I optimise patient movements



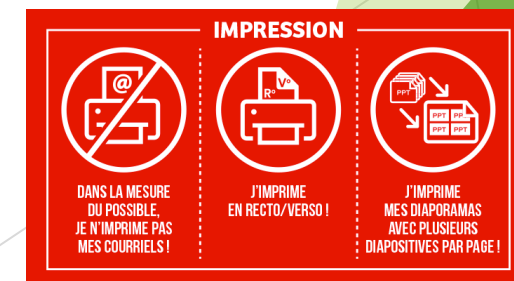
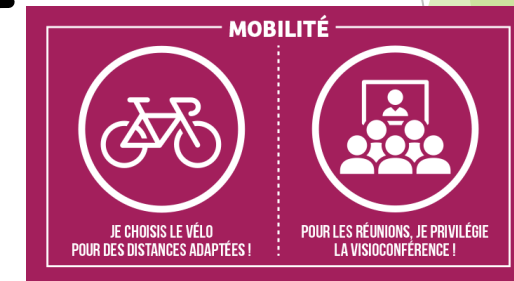
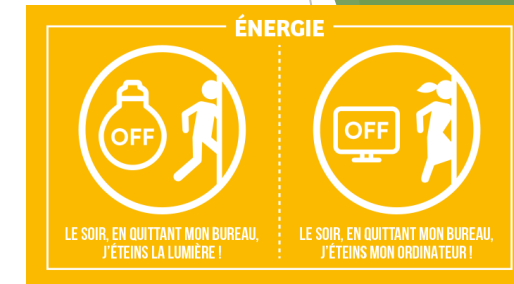
I prioritise sustainable transport



I reduce and sort my waste production



I reduce my food waste footprint





**“We have not inherited the Earth from our parents, we are borrowing it from our children.”**

Lester Brown