



Team UK

On the 7th of May of 2023, 24 hours after the King's coronation, 4 managers met the UK coordinator in London.

Ann Charlotte Roberts

Mark Van Den Broek

Maria Bernadette Di Sciasco

Zaid Alnakeeb



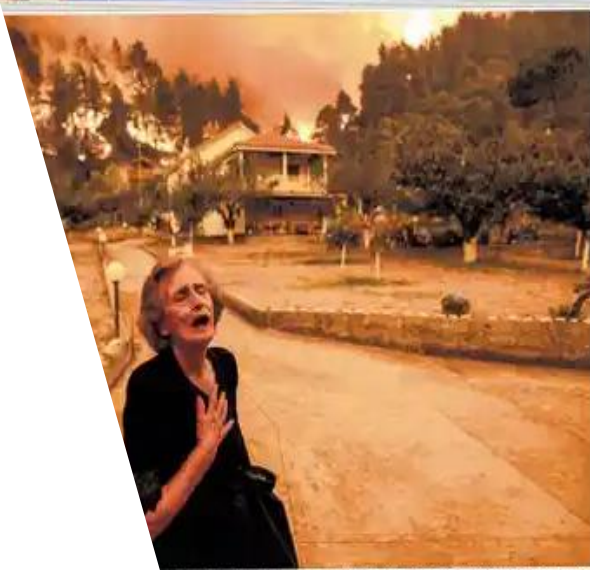
Contents:

1. The Green Plans (Zaid & Maria)
2. Local examples (Lotta & Zaid)
3. A New Hospital Plan (Mark)
4. Barriers (Mark)

Greener NHS

Climate change poses a major threat to our health as well as our planet. The environment is changing, that change is accelerating, and this has direct and immediate consequences for our patients, the public and the NHS.

The Greener NHS programme will work with its staff, hospitals and their partners. We will build on the great work being done by trusts across the country, sharing ideas on how to reduce the impact on public health and the environment, save money and reach net carbon zero.



Left: The EU yesterday before a huge opposition to back it on the island. **Wildfires in Greece** Page 27

crisis: inevitable, and irreversible

Leader comment
The science is unequivocal. The verdict is clear. There is no time for manoeuvre.



1.5C warmer by 2030
IPCC panel warns

Level
students for exams
1 year, plead
teachers



DAILY MAIL
CAMPAIGNING NEWSPAPER OF THE YEAR

FREE Brilliant puzzles pullout
David denies & Greens
Greens pay pack



PM: WA
TO RED
ALERT
CLIMAT
CRISIS

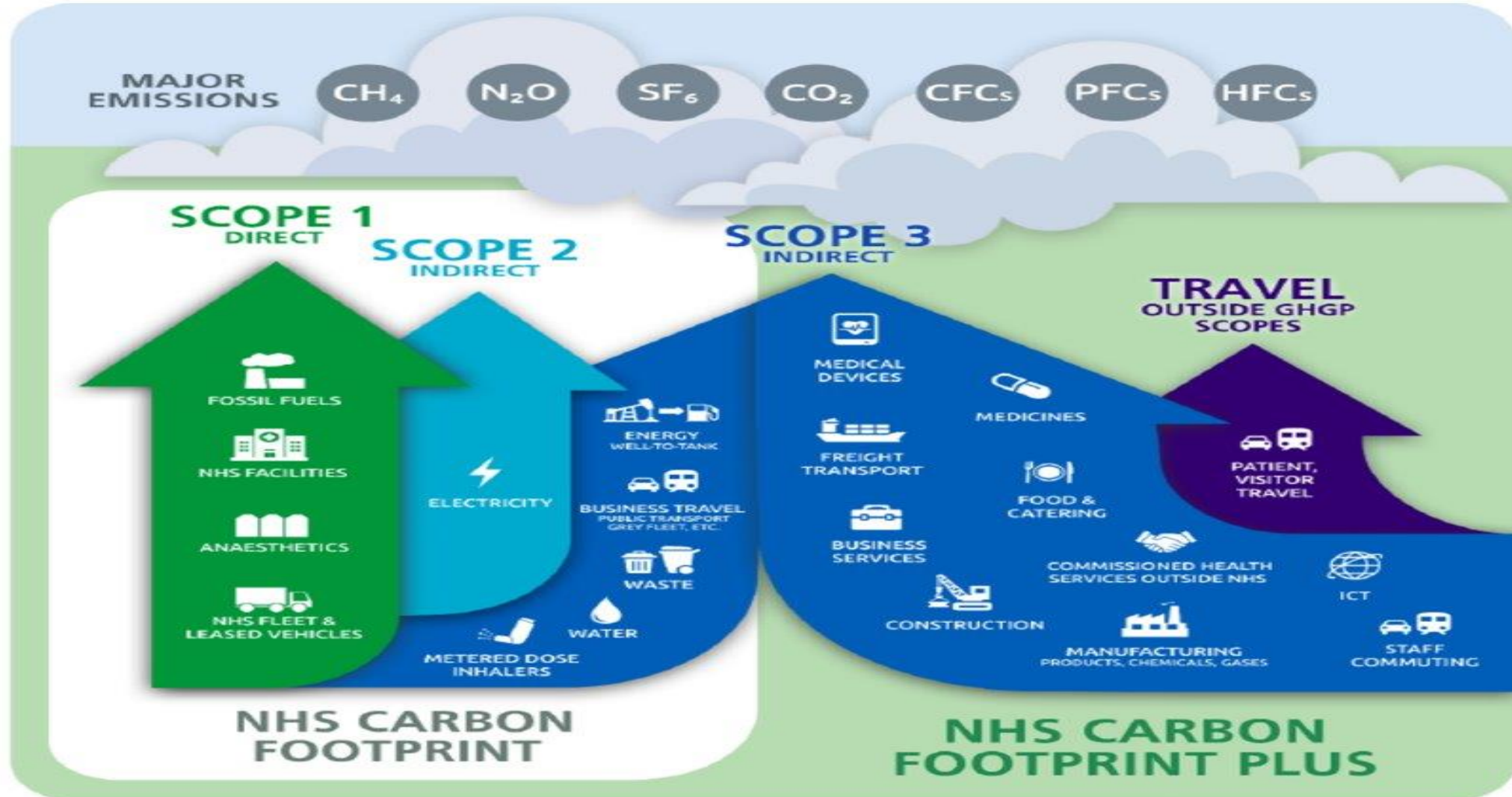
What is a Green Plan?

- A Green Plan is a central document that states the plans, actions, and timescales to reduce carbon emissions and deliver care in a more sustainable way.
- Every NHS organization in England is required to produce a Green Plan.

**Delivering a 'Net Zero'
National Health Service**



Greenhouse Gas Protocol (GHGP) scopes in the context of the NHS



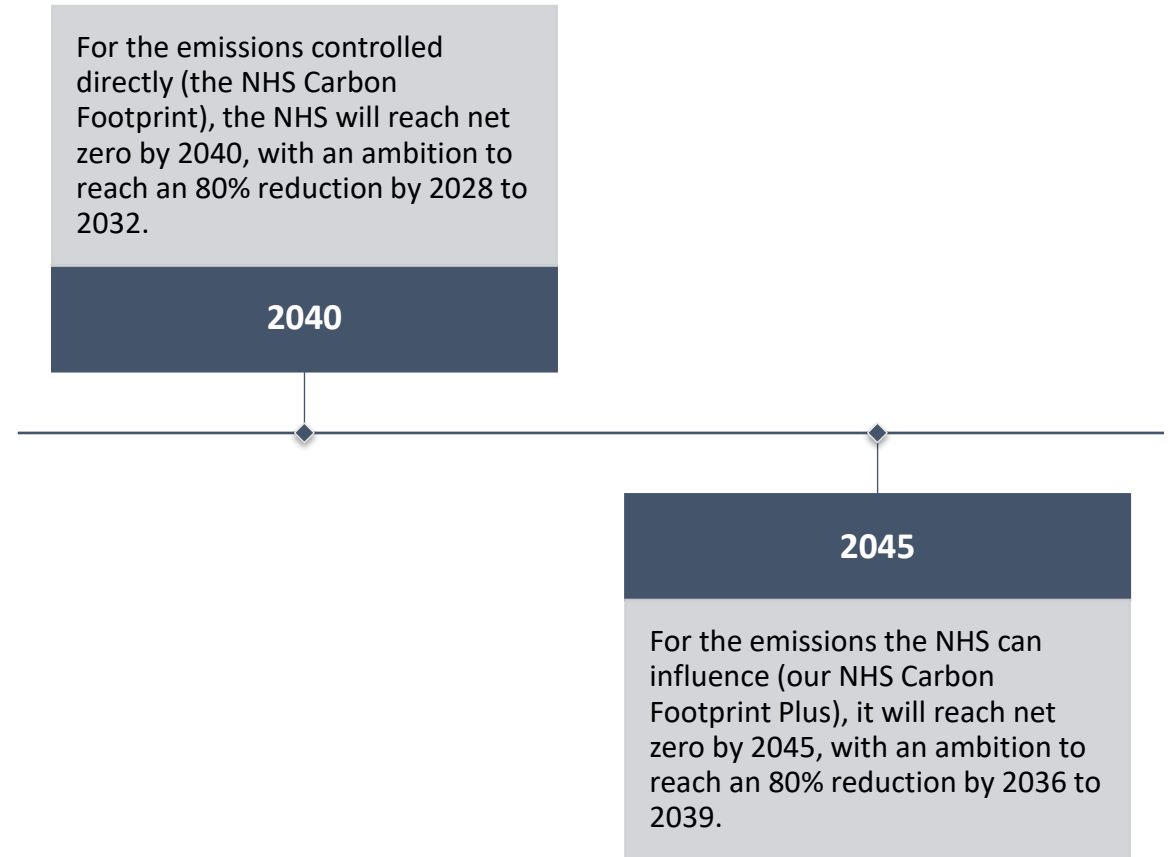
Source: [Delivering a 'Net Zero' National Health Service](#)

Two main targets are set

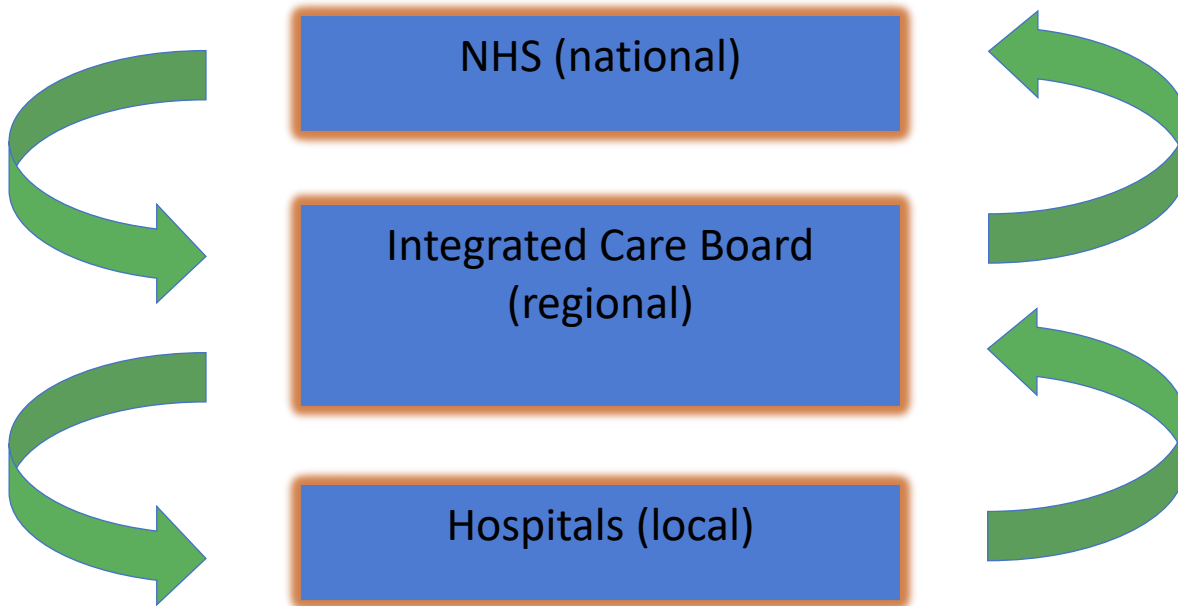
How to produce a Green Plan: A three-year strategy towards net zero



www.england.nhs.uk/greenernhs



















Plans &
Targets



Results &
Reports

York and Scarborough Teaching Hospitals NHS Foundation Trust Green Plan 2021-2026

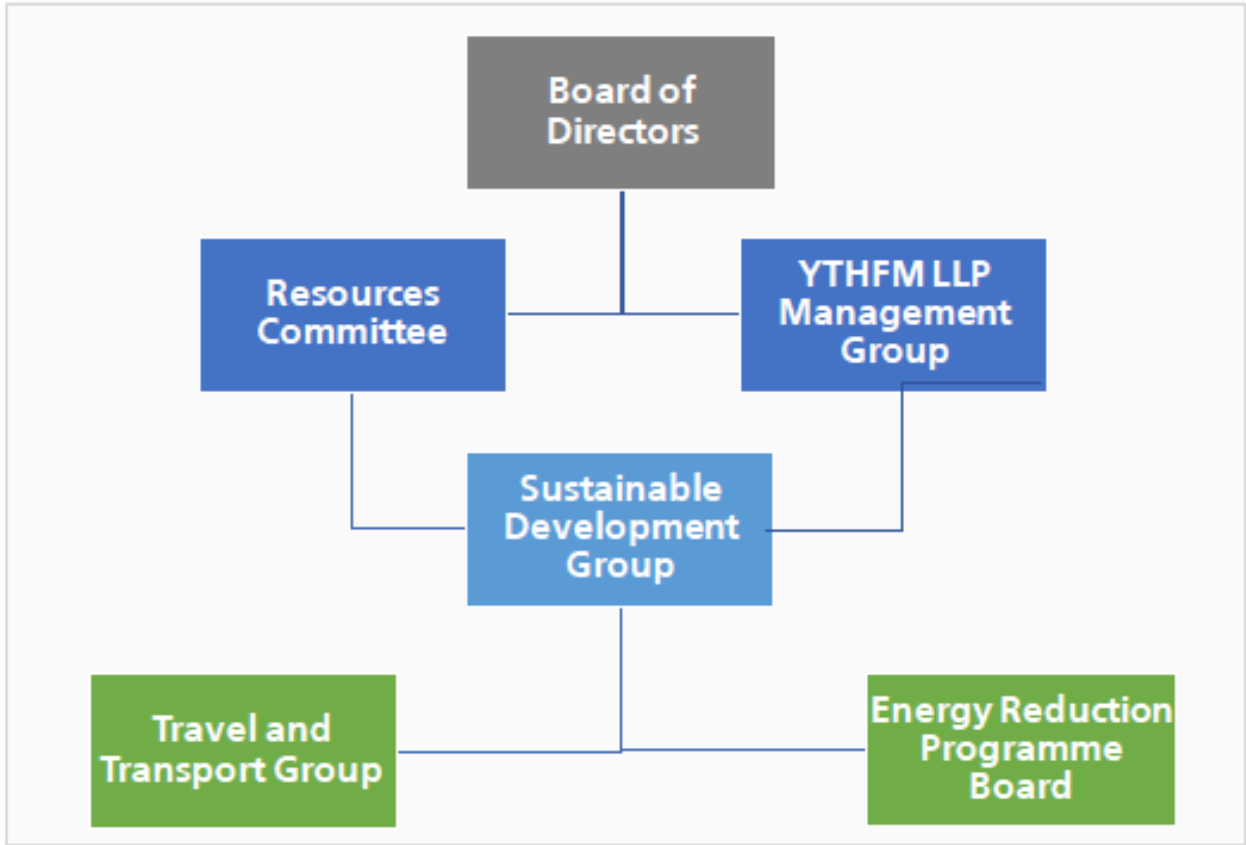
Targets

	Cut our business mileage by 20% (2023/24)		Reduce our fleet air pollution emissions by 20% (2023/24)
	Work Towards purchasing vans under 3.5 tonnes that are ULEVs or ZEVs (April 2022)		Ensure that all new staff lease, salary sacrifice and pool cars purchased/leased are ULEVs or ZEVs (April 2022)
	Reduce face-to-face outpatient appointments by 1/3 by 2023/24 through use of virtual consultations		Reduce water usage and waste
	Phase out use of oil for primary heating (2023/24)		Support move to less carbon intensive inhalers, where clinically appropriate
	Reduce avoidable use of single-use plastics		Cease use of single use plastic cutlery, plates and cups on our premises
	Reduce use of single-use plastic food and drink containers, cups, covers and lids		Maximise the rate of return for walking aids
	Work towards ensuring that all new builds and refurbishments conform to Net Zero Standards		Replace lighting with LED alternatives during routine maintenance
	Provide an annual review of adverse weather impacts and adapt premises and service delivery to mitigate risks of climate change		Reduce carbon emissions from use of gas, oil and electricity through better controls and building fabrics and implementation of renewables and heat pump technology

Targets derived from the NHS Standard Contract Service Conditions 2021/2022³, NHS Long Term Plan 2019⁴, NHS National Operational Planning and Contracting Guidelines 2021/22⁵ and the Greener NHS MoU requirements April 2021.

Areas of focus

	Corporate Approach The top down approach to sustainability within our organisation.
	Asset Management and Utilities The use of utilities such as gas and electricity across our estate.
	Travel and Logistics The travel of our fleet, business users, patients and visitors along with our staff commute.
	Adaptation The Trust's ability to deal with the impacts of a changing climate and associated extreme weather events.
	Capital Projects The consideration of Net Zero and sustainable development principles in new build and refurbishment projects.
	Green Space and Biodiversity The availability of green spaces for staff and visitors and the wildlife our sites support.
	Sustainable Care Models The integration of environmental sustainability into care models to improve efficiency and long term sustainability.
	Our People Ensuring staff are engaged with the sustainability agenda and encouraging staff to take ownership within their areas of influence
	Sustainable Use of Resources Reducing waste and the use of single use plastics.
	Carbon/Greenhouse Gases The total emission profile of our organisation and targets relating to Greenhouse gas reductions



Creating a new NHS England: Health Education England, NHS Digital and NHS England have merged.

Home News Publications Statistics Blogs Events Contact us

Google Translate

NHS 75
England

About us Our work Commissioning Get involved Coronavirus

Search

New NHS regulations to improve openess and transparency

Search news

You can use the filters to show only news items that match your interests

News

“Absolute transparency is the key to driving improvements in standards of care” says Chief Nursing Officer

Transparent and accountable he

www.gov.uk/government/speeches/transparent-and-accountable-healthcare-why-the-culture-in-the-nhs-still-needs-to-change

GOV.UK

Home > Health and social care > National Health Service > Compassionate care in the NHS

Speech

Transparent and accountable healthcare: why the culture in the NHS still needs to change

Secretary of State for Health Jeremy Hunt talks about his Four Pillar Plan for the NHS and creating a transparent and accountable culture.

NHS

This article is more than 10 years old

Transparency in the NHS not only saves lives - it is a fundamental human right

Tim Kelsey

Home > Planning and improving research > Policies, Standards & Legislation > Research transparency >

Make it Public: transparency and openess in health and social care research

Last updated on 21 Mar 2023

Glos

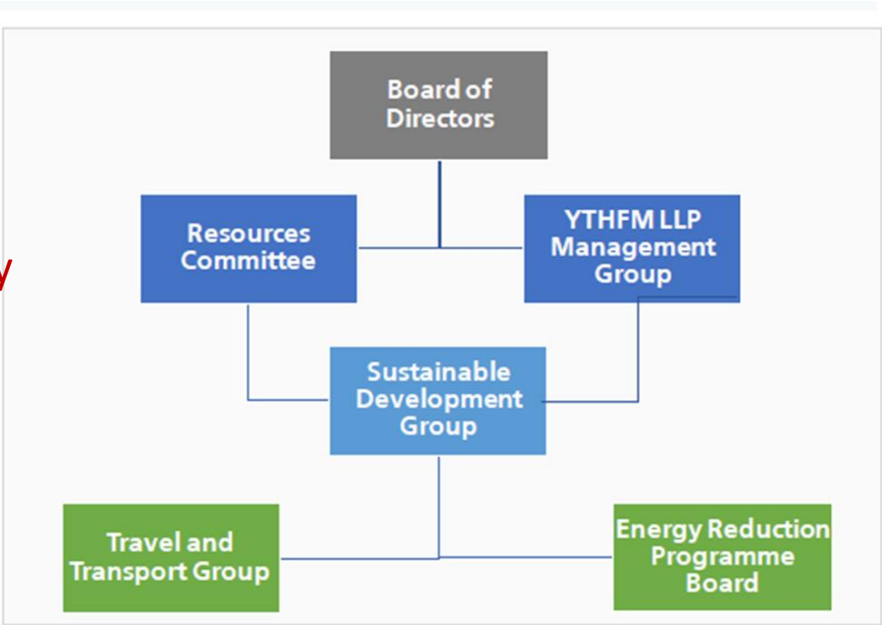


DATA COLLECTION



Annually

Quarterly



Monthly

Greener NHS Dashboard

Trust Annual Report

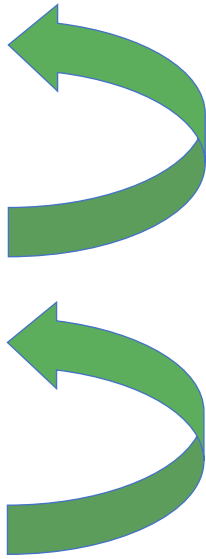
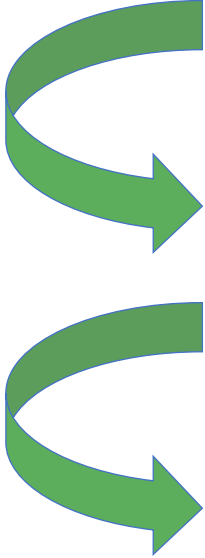
Plans & Targets

NHS (national)

Integrated Care Board (regional)

Hospitals (local)

Results & Reports



Bridlington Hospital Progress – 60-80% carbon reduction

- Solar panels on roofs - used to maximize sun's rays throughout the day
- Ground mounted solar farm maximizes power of sun for the greatest part of the day
- The solar PV system, which consists over 2,000 panels both ground and roof mounted, will be capable of supplying 100% of the electricity demand of the heat pumps, meaning at times 100% of the heat demands of the hospital will be met via a 100% renewable source.

Photograph courtesy of Challenge - the national competition for the nation's leading green buildings. Bridlington Hospital is the winner!



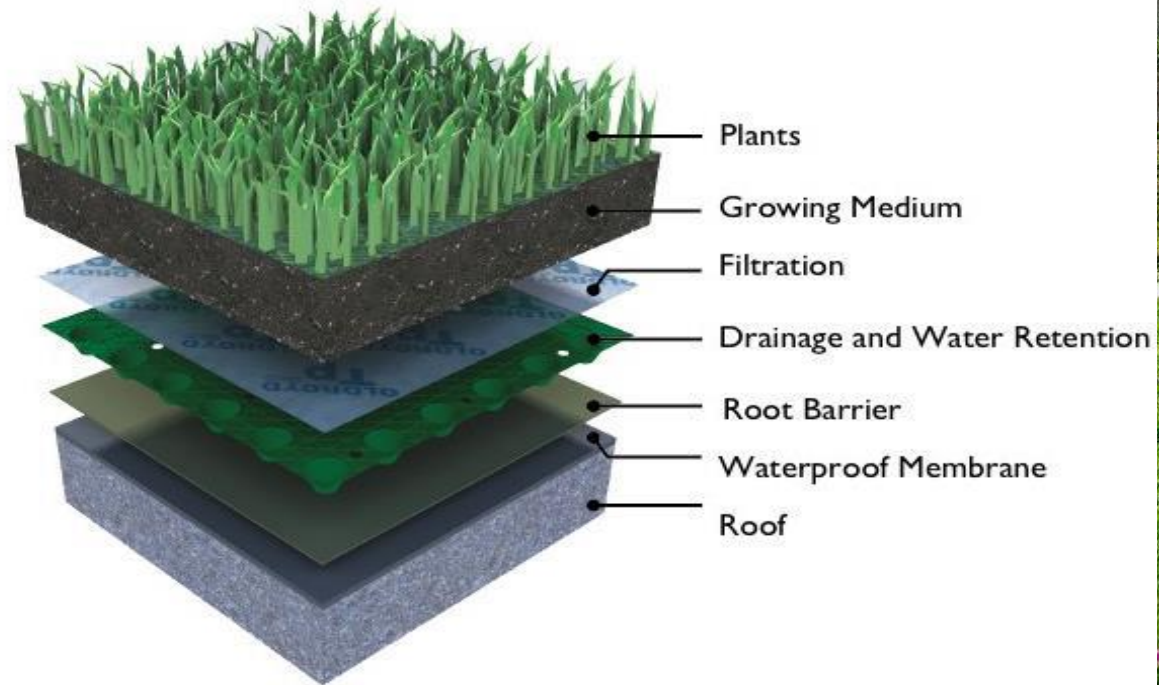
Bridlington Hospital Progress – 60-80% carbon reduction

- Solar panels on Roofs - used to maximize sun's rays throughout the day
- Ground mounted solar farm maximizes power of sun for the greatest part of the day
- The solar PV system, which combines over 1,600 panels both ground and roof mounted, will be capable of supplying 100% of the electricity demand of the heat pumps, meaning at times 100% of the heat demand of the hospital will be met via a 100% renewable source.



Sedum Roofs

Sedum Roofs helps keeping the buildings cool in Summer and warm in winter. They provide insulation and they also look beautiful and encourage wildlife.



Sedum Roofs; Pros + and Cons -

PROS

- They **last longer** than conventional roofs, up to twice as long.
- They are amazing at **controlling the building temperature** - they will keep it warm in the winter and cool in the summer
- Incredibly **thermal efficient** - they lower your heating bills by effectively regulating the temperature of the building
- **Lower your carbon footprint** - the foliage that you install takes the poisonous carbon monoxide out of the air and uses it in photosynthesis to provide its own energy. It then releases oxygen into the atmosphere which helps the environment and makes our air cleaner
- **Aesthetic value** - they look beautiful compared to standard flat roofs and they are encouraging the wildlife

CONS

- **Expensive to install** initially - the various materials required and the amount of labor involved mean it can be costly to set up.
- **Maintenance** - needs weeding, feeding and watering much like a traditional garden



Drone Chemotherapy to Isle of Wight

Patients who live on the Island have their chemotherapy treatment drugs delivered by a courier from Portsmouth Hospitals University NHS Trust, where they are manufactured, followed by a ferry or hovercraft to the Island and then onwards by taxi to St Mary's Hospital in Newport.

This revolutionary way of transporting life-saving chemotherapy drugs reduces a four-hour journey time – by road and sea – to a 30-minute flight.

New Hospital building







← Increased Activity from 2006/7 to 2018/19

