



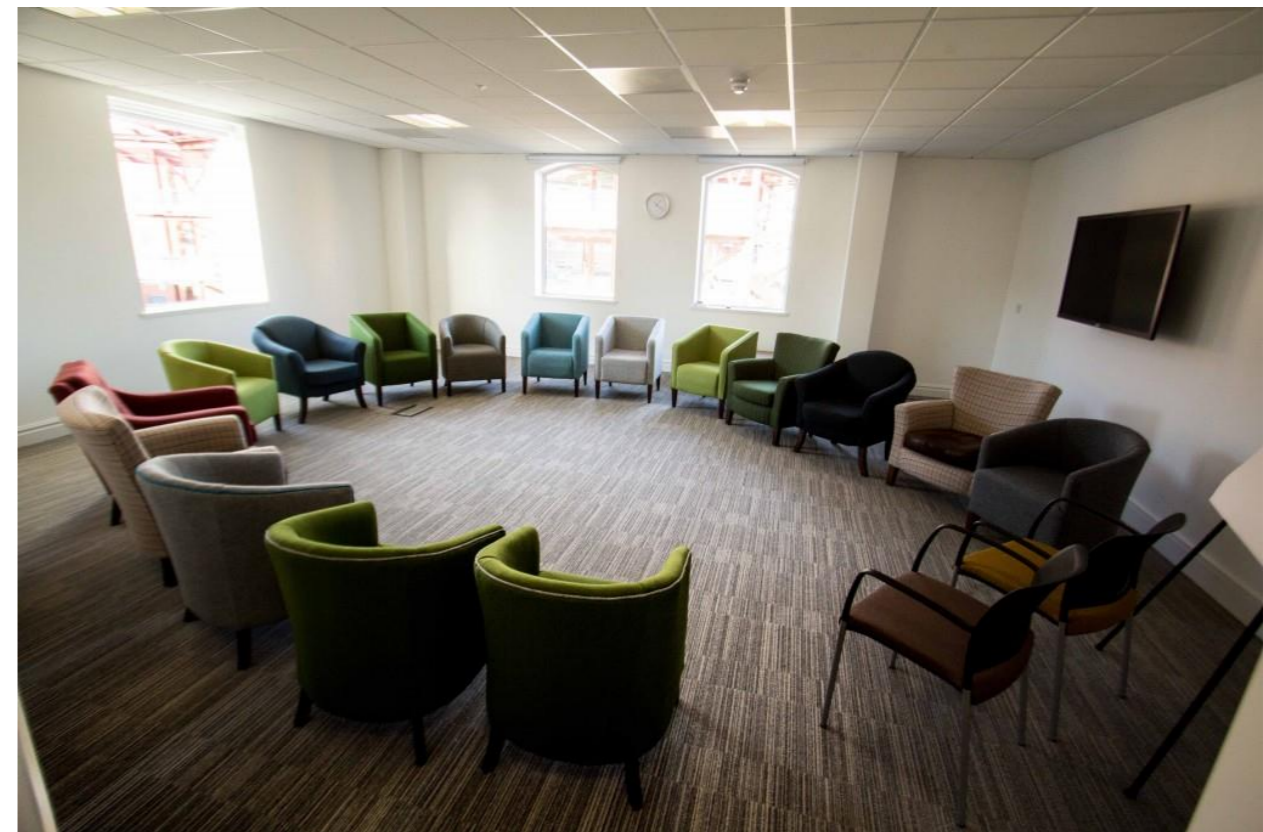
Welcome to World Café

11:30 - 13:00



What is World Café?

- Simple, effective, and flexible format for hosting **group dialogue**
- Aims at harnessing **collective wisdom** and NOT at reaching a resolution
- Fosters conversation between small group to **share** their perspectives and ideas on a topic or question, before **moving on** to explore a different area with a different group of people.



Why use World Café at the Agora?

- Different opportunity to exchange ideas and examples - as a discussion
- Starting point to spark new questions as you learn about the context your colleagues work/live in and what they have found

What can you get from the session?

- Chance to **reflect** on your time away - and perhaps appreciating what you have back home in a new way
- **Share** your thinking/experiences, and ask colleagues questions
- What are the common themes emerging? And **what can you do** about/with them?
- Meet new colleagues and expand your **network** - exchange business cards/contact details!



Café etiquette

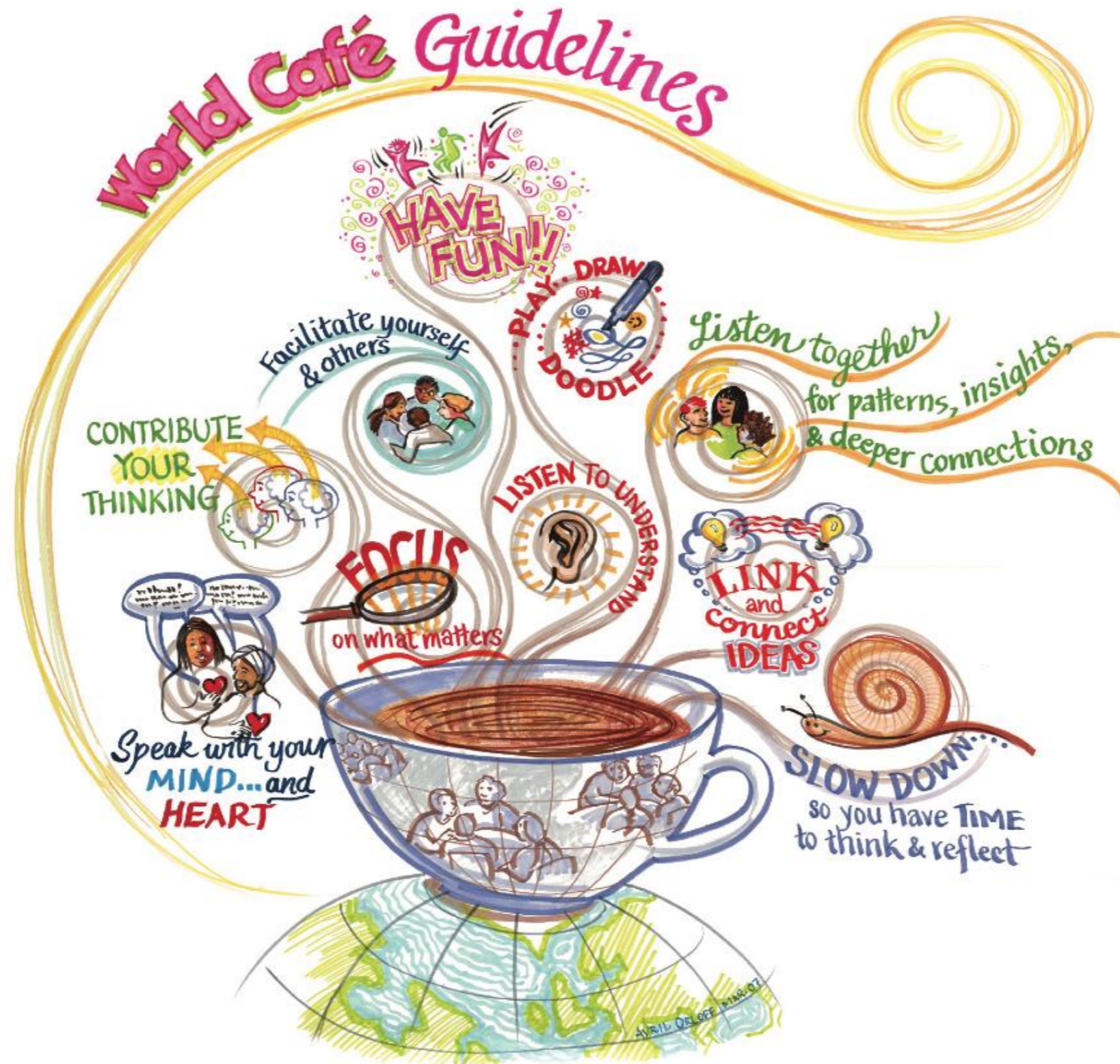


Table hosts

Here to help - not to do all of the work!



Six Drivers of hospital development

- Technology and knowledge
- Professionalisation of the workforce
- Organisation of activities of the professionals
- Patients and citizens
- Ownership of the hospital – private / publicly owned
- Finances

Discussion topics for each round : Following on from the impact of Covid19, what were the most valuable evidence-based healthcare management practices / innovations that you discovered during your exchange programme – in respect of the following key areas?

Round 1:

- **Rest** – i.e. recognising, and supporting, staff to maintain their physical and mental health and wellbeing – both during the COVID19 pandemic and in the post-COVID19 pandemic era

Discussion topics for each round: Following on from the impact of Covid19, what were the most valuable evidence-based healthcare management practices / innovations that you discovered during your exchange programme – in respect of the following key areas?

Round 2:

- **Restore** – i.e. attraction, recruitment and retention of staff – in the post-COVID19 pandemic era, organisational culture, building the new workforce

Discussion topics for each round: Following on from the impact of Covid19, what were the most valuable evidence-based healthcare management practices / innovations that you discovered during your exchange programme – in respect of the following key areas?

Round 3:

- **Recover** – i.e. re-establishing disrupted services, addressing health inequalities, rebuilding trust in patients/citizens, systems integration, structure of organization, national policy, ways of working, building for sustainable (Net Zero) healthcare in the future etc.

LUNCH



hope

European Hospital and
Healthcare Federation