

HOPE FINLAND 2022

FI



Seinäjoki

Lidia IT
BrigittedDK

Kuopio:

CarmenES
HannesAT

Tampere

Linda NL





Facts

population	5,4 million
mobile phones	5,2 million
saunas	2,0 million
border Russia	1340 km
Marimekko	popular designer
Santa	lives in the north
Finland	won the WK Ice Hockey



Healthcare, Social care and Rescue service reform Finland 1-1-2023

Priorities of the health and social services reform



(Vulnerable) elderly people ↑
Nurses ↓
Costs healthcare ↑
Aftercare facilities ↓



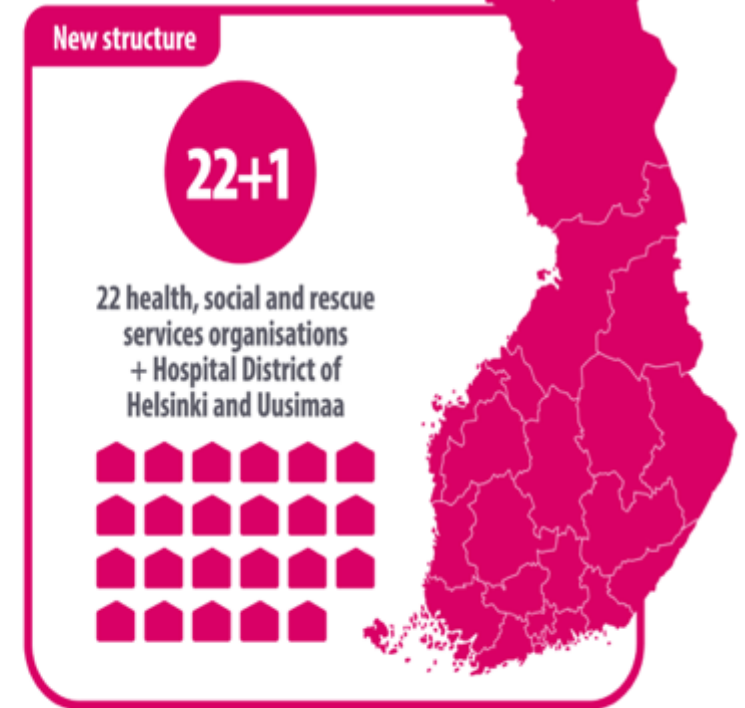
Organization:

Special health care will be distributed from the 5 university hospitals.

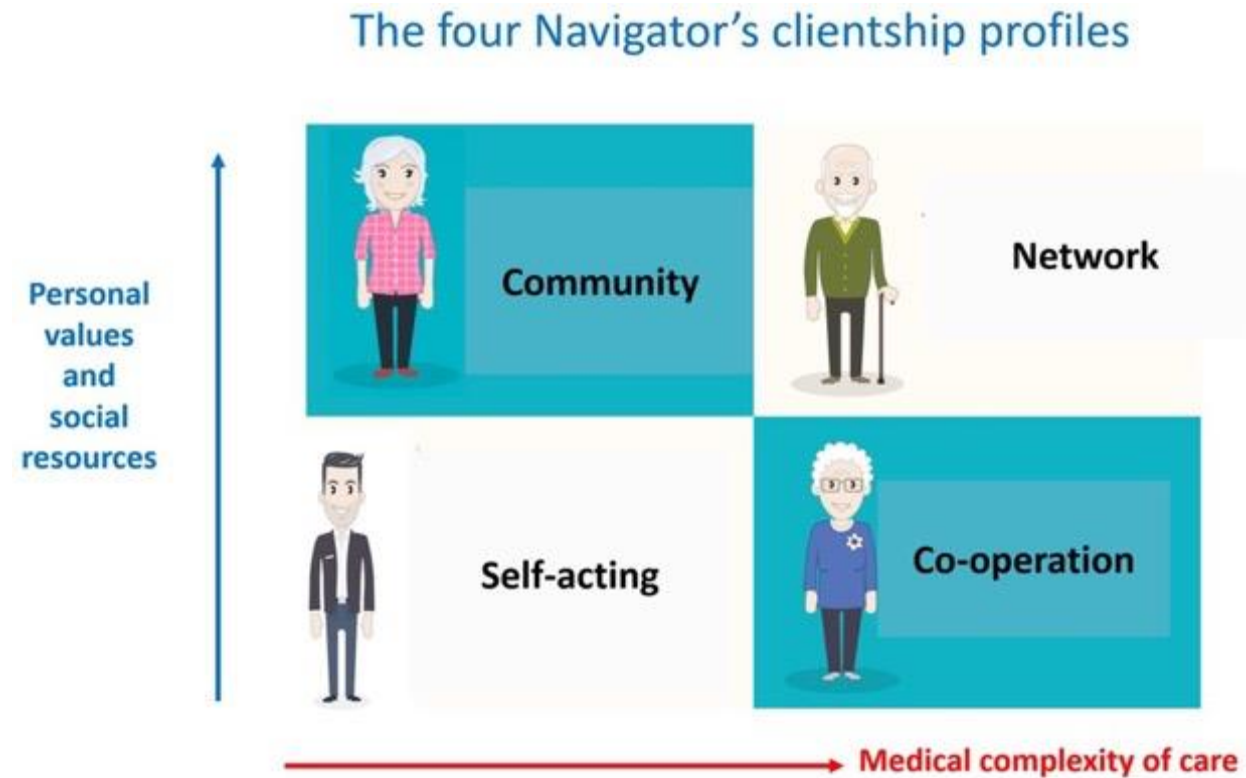
There will be less health and social services organizations.

Money will not anymore come from municipalities but from government.

New wellbeing services county structure 1 January 2023



People



- Self-acting clientship-self-integration
- Self-care/self-management
- Good instructions for different kind of situations
- Utalization of digital services;



Employees

*They know about the new system,
but nobody knows what to expect,
at least that what they say.
There is a lot of uncertainty*

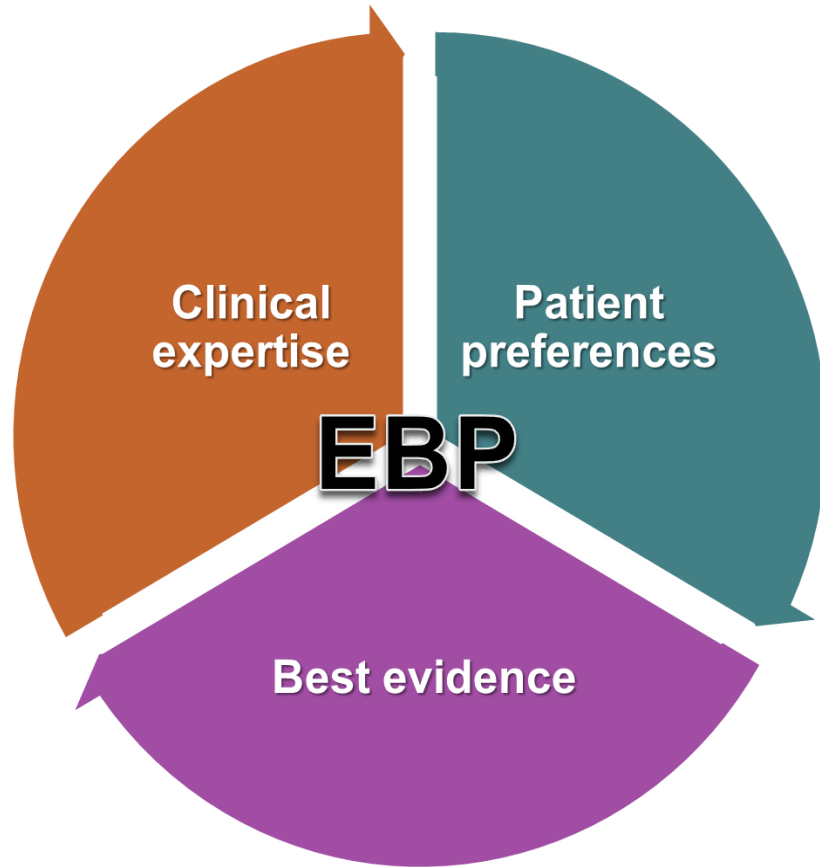


Hi,

The Finnish social and health care reform is based on best knowledge. Database is collected around the Europe and Finland. Of course, most of it is politics. Beveridge or Bismarc model. We chose Nordic model that is based on public money and responsibility. Evidence based is not the term here, because it is a mixture of compromises and values in Finland. You must remember the history of Finnish system.

Yours,

Evidence in healthcare



© CJT Consulting

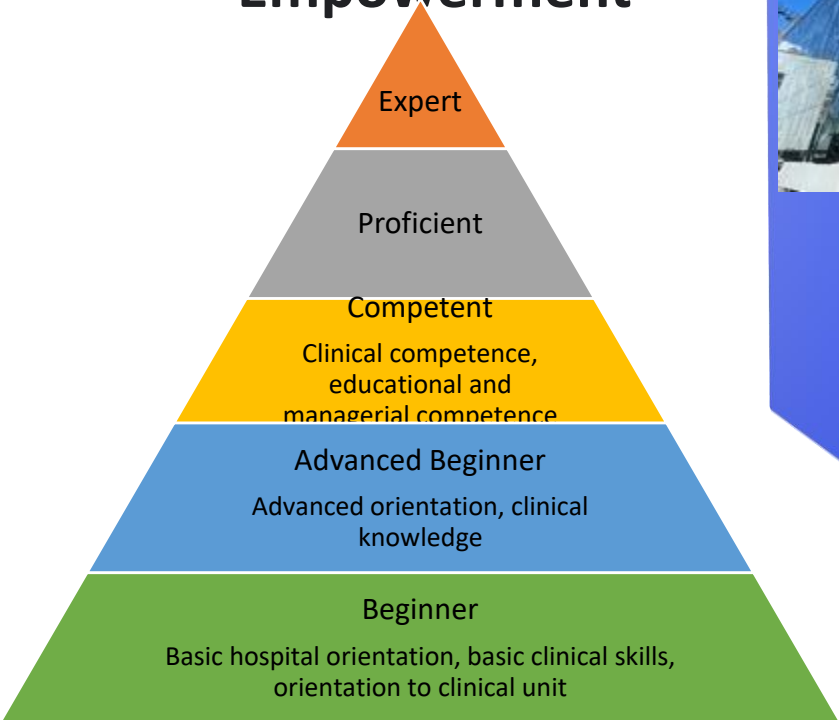
- **Macro level:**
Policy-makers
- **Organizational level:**
Hospital managers
- **Micro level:**
Health care professionals at the wards



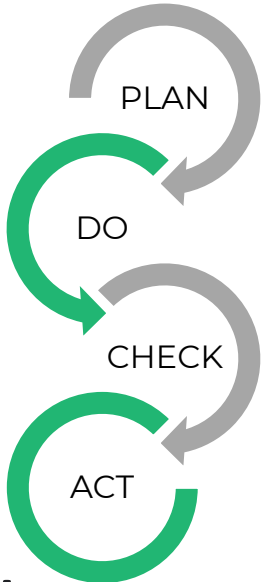
Empirical Quality Results

- INDICATORS**
- Nurse Turnover
 - Nurse Engagement Survey (NES+)
 - Patient Falls
 - Catheter Infections
 - Pain Impairing Function
 - Hand Hygiene
 - Clinical Learning Environment and Supervision Scale (CLES)
 - Pressure Ulcers
 - Patient Feedback
 - Nutritional Risk Screening (NRS2002)

Structural Empowerment



Transformational Leadership



New Knowledge,
Innovation,
Improvements

Exemplary Professional Practice





Medicationmanagement

high automatisisation standard

Automated stock-control and dispensing - in the pharmacy



Automated drug dispensing systems - on the ward



RFID-based Single Lock Medication Cart

- to improve patient safety
→ less errors
- to improve productivity of the medicine processes
→ save time
- to reduce costs

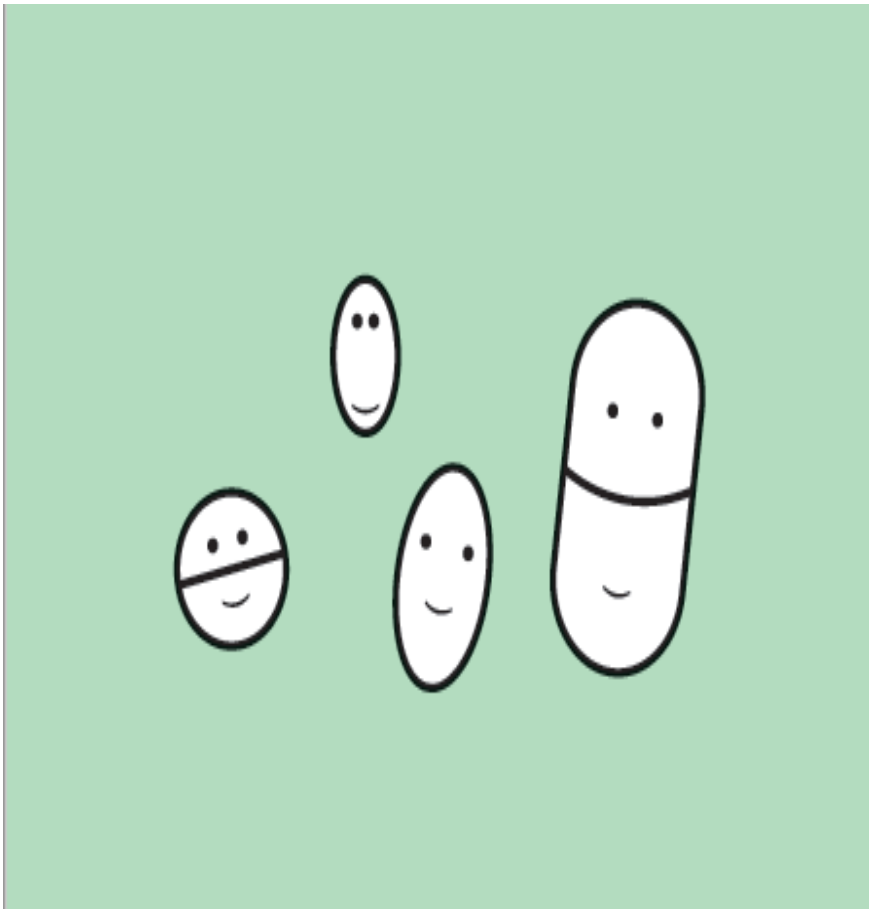
CLMA - Closed Loop of Medication Administration

from prescription to taking medication



E-examination for nurses

- Pharmacological expertise



Goal:

To make sure that nurses keep their skills up-to-date

- according to best practice



Examination every 5 years

- All nurses take a computer-based examination called LOVE – the Finnish license required to administer medication to patients
- The examination includes basic knowledge, speciality subjects and a practical examination (iv)
- The Universities co-operate on designing the examination and the preparatory material (based on national guidelines)
- The employer pays the examination fees and a local co-ordinator signs up the nurses and keeps track



