



# The Future of Integrated Care

*Enhancing the value of care to people  
How innovations meet end users' needs in  
integrated care contexts*

## The CONNECARE Experience

Eloisa VARGIU

**eurecat**

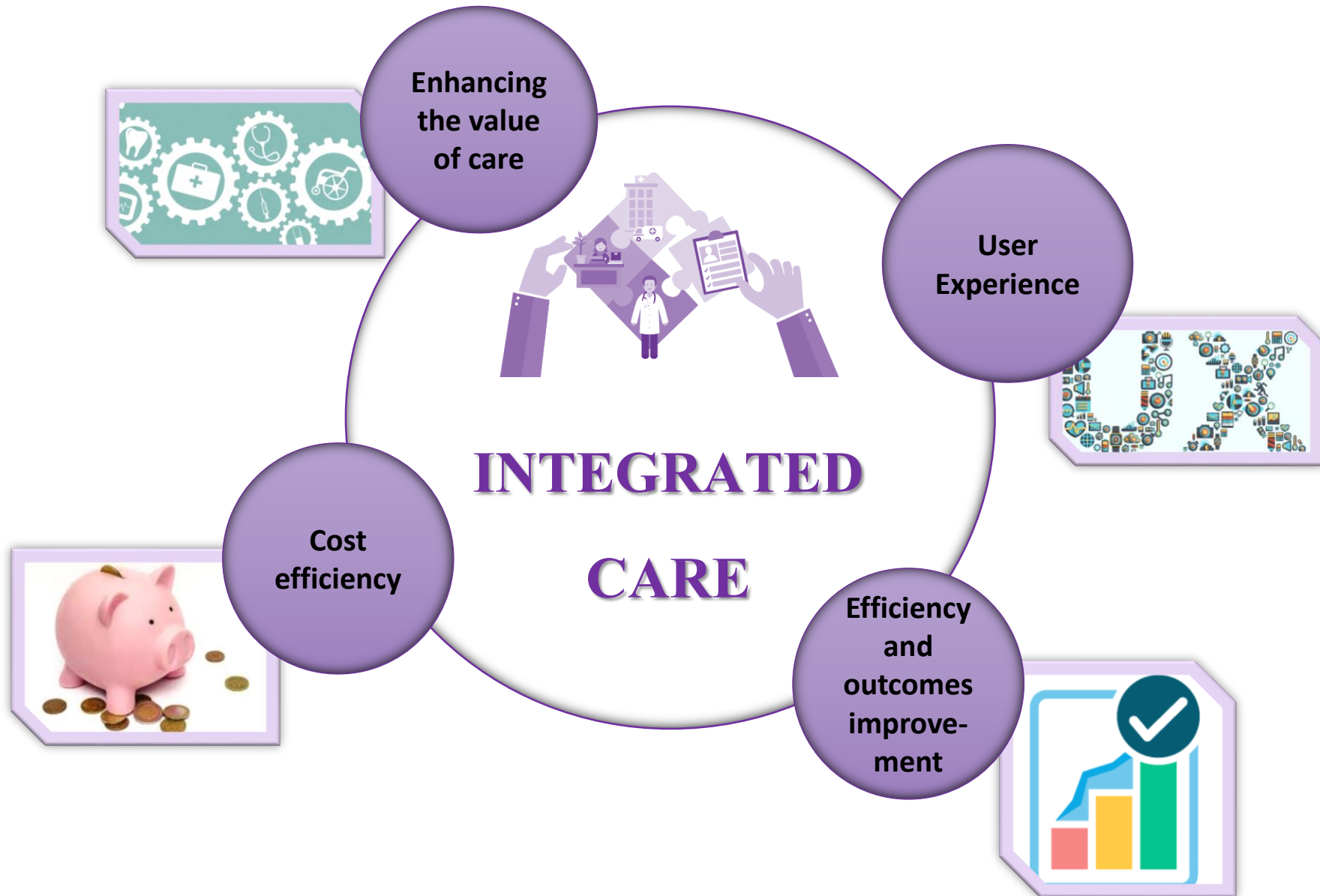
With the collaboration of





- ❑ In 2015 the European Commission funded 5 projects under the H2020 call SC1-PHC25
- ❑ The aim of the call was to develop innovative solutions to improve and advance **home-based integrated care** for people suffering from **chronic conditions**, including co-morbidities
- ❑ The solutions progressed by the 5 funded proposals (Polycare; CONNECARE; ICT4LIFE; CaregiversPro-MMD; ProACT) address this call to advance digital integrated care increasing citizen's independence and quality of life, allowing them to remain in their own homes, **supported by families, care-givers** and **health professionals**





# ENHANCING THE VALUE OF CARE TO PEOPLE





## WHO

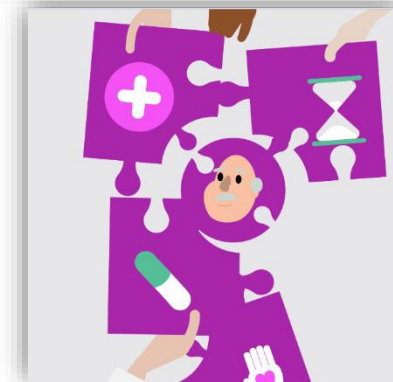
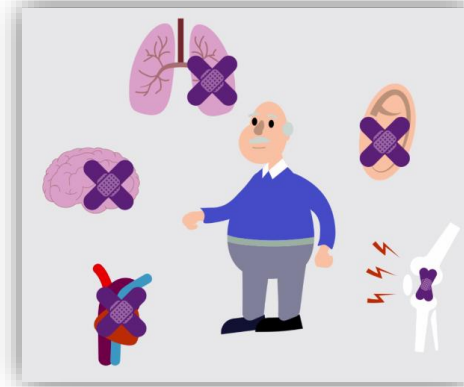
- Chronic Patients

## WHAT

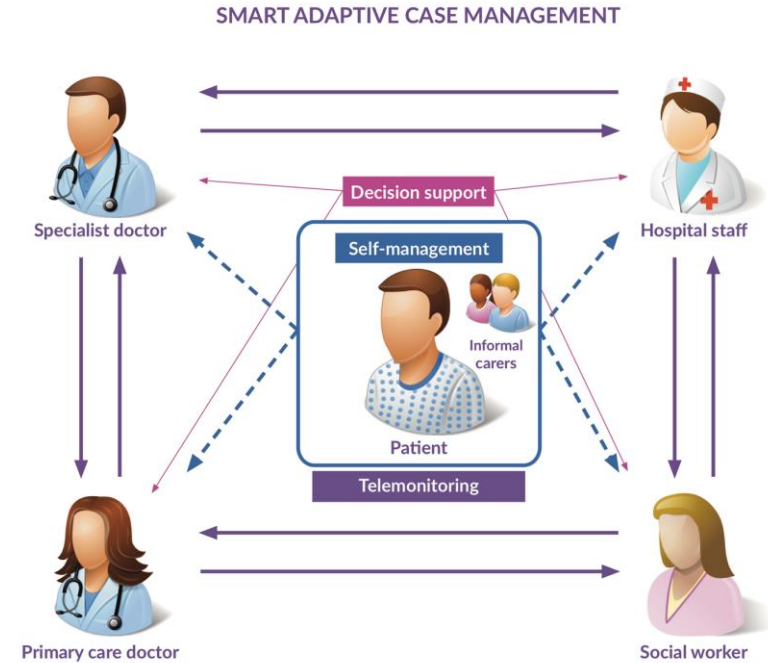
- Organizational
- Care and social services
- Technological paradigm shift

## HOW

- Patient-centered co-design process



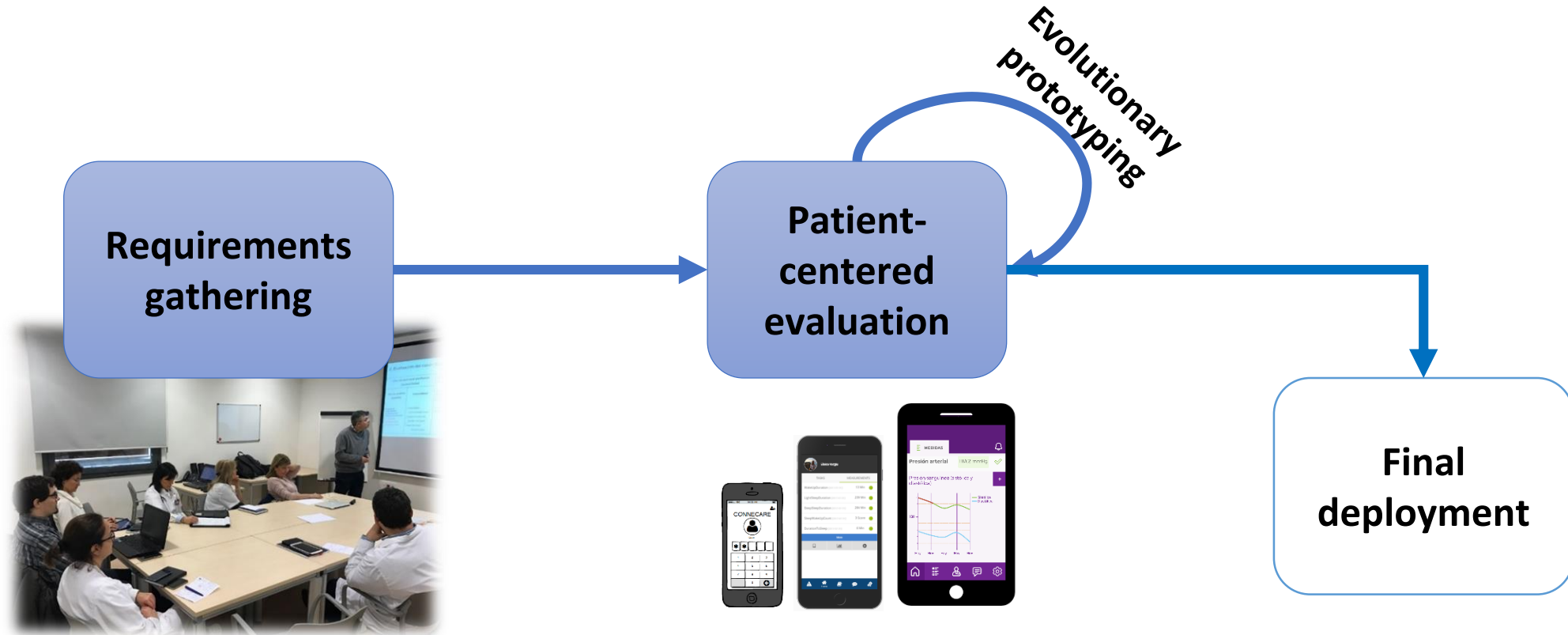
- Based on the concept of 4P medicine
  - Predictive
  - Personalized
  - Preventive
  - Participatory



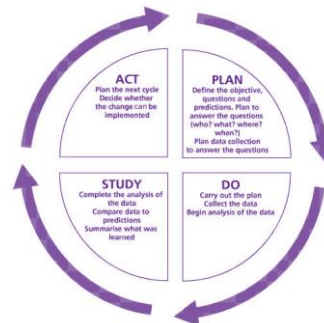
- Engaging patients with a 360° approach
- Self-management for patient empowering
- Collaborative and adaptive support to professional staff
- Support for decision making

# USER EXPERIENCE

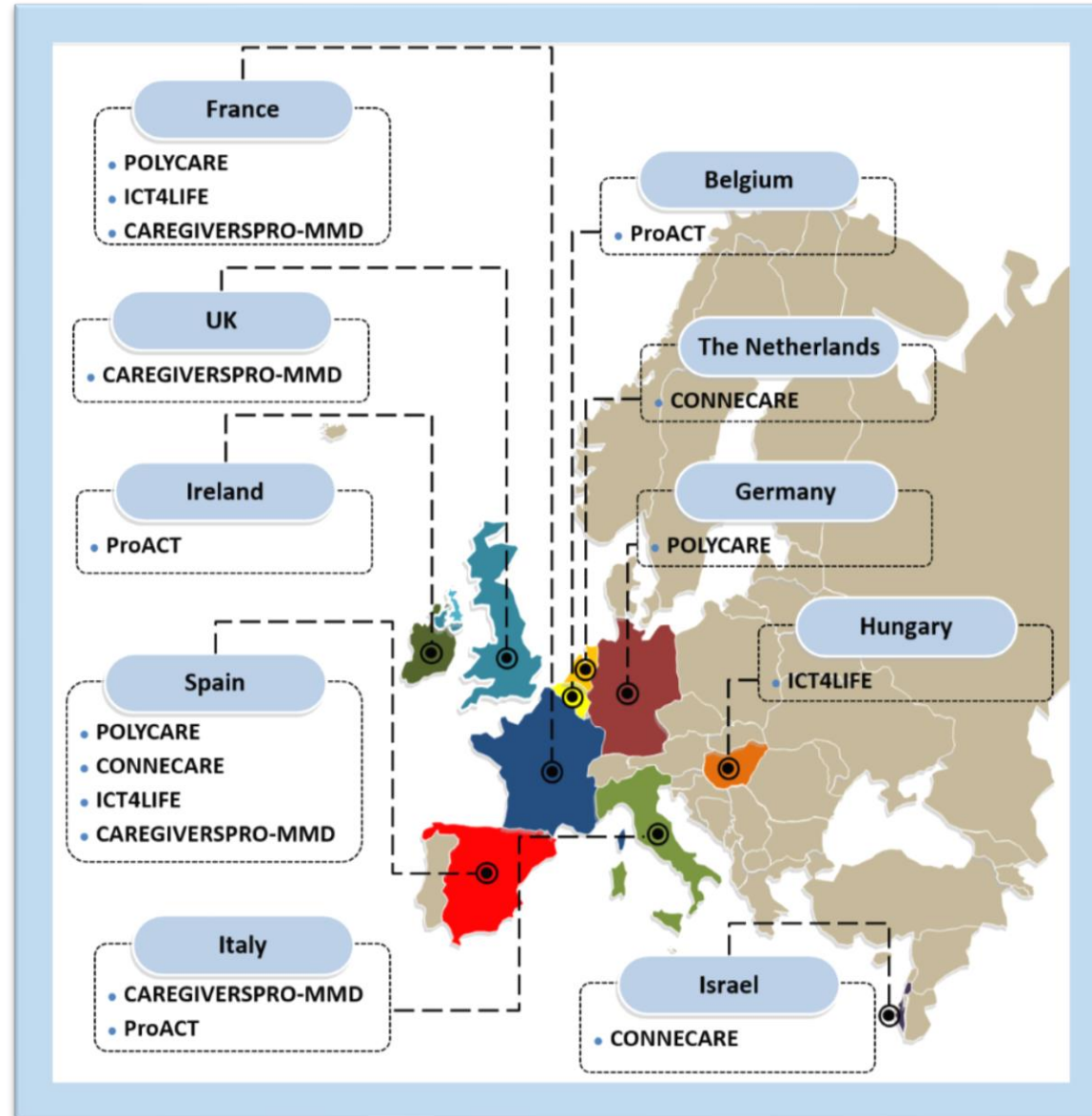




Co-diseño con pacientes y profesionales









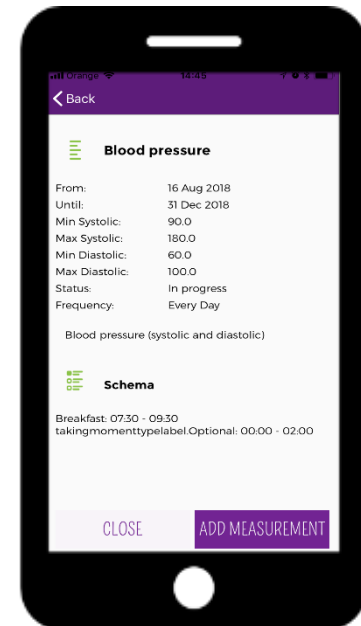
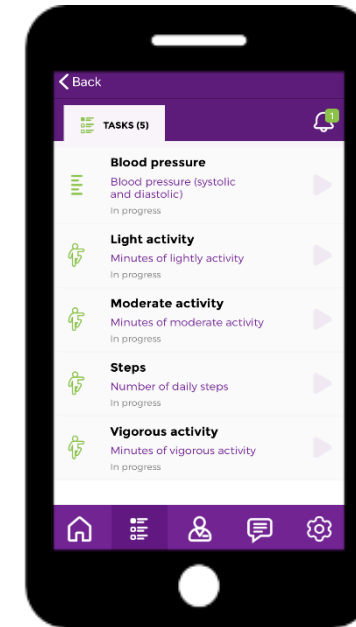
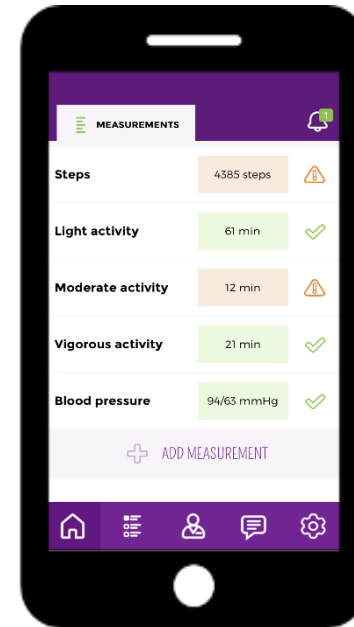
## Smart Adaptive Case Manager (SACM)

Estat del pacient		Diagnosis		Barreres	
Charlson	37	<p>PGD(RKP) Pròtesi Genoll Diret Diagnòstic de la cirurgia</p> <p>37 Charlson</p> <p>PRESEVAT DANY LLEU/MODER DANY SEVER</p>		Compliment farmàcia	0
HAD Ansietat	11			Dificultat tractament	3
HAD Depressió	14			Capacitat d'autocura	1
Pfeiffer	5			Habitatge Social	1
Barthel	30			Capacitat Cuidador	1
Not available at current stage					
Not available at current stage					
Not available at current stage					
Hb (gr/dl)	4				
Prot (gr/dl)	4				
ASA de tipus:	III				
WOMAC D.	9				
WOMAC R.	4				
WOMAC C.	32				
S-LANSS	14				
EQND repòs	6				
EQND moviment	7				

- In total, 92 professionals are involved in the studies in the 3 sites
- Results after 3 month of studies show a successful involvement of a wide range of professionals from both hospital and primary care settings
- The overall system is working smoothly without any issue and professionals like it

- ❑ In total, 37 patients have been recruited in the studies in the 3 sites
- ❑ Adherence is good
- ❑ Improved self-Management of their conditions
- ❑ Technology and Usability issues
  - Elderly people use old smartphones
  - Internet connection at home
  - Need of interaction to measure the vital signs

## Self-Management System (SMS)



# EFFICIENCY AND OUTOCOMES IMPROVEMENT





## Organizational Shift

- ❑ Making health and social care systems interoperable
- ❑ Promoting collaboration among care settings
- ❑ Moving from institutional reactive care to a home-based preventive model





## Care and Social Service Shift

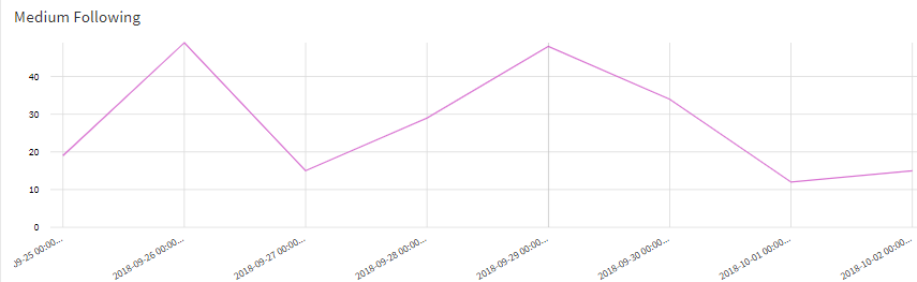
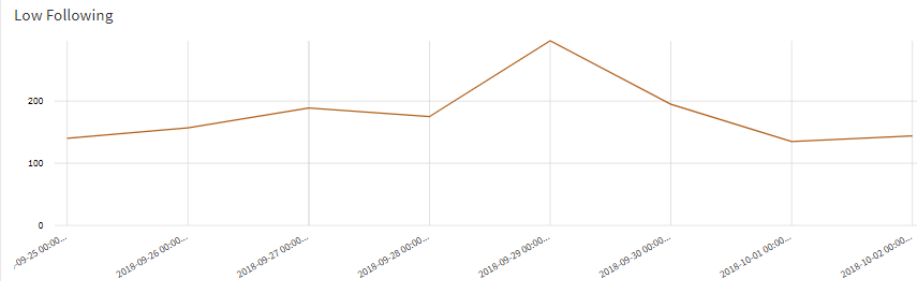
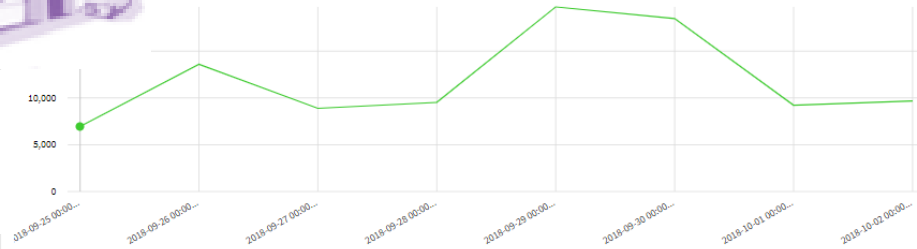
- Health risk prediction
  - operational population-based tools
  - a patient-based five-dimension scoring strategy



## Technological Shift



Professional Staff



Patient



# COST EFFICIENCY

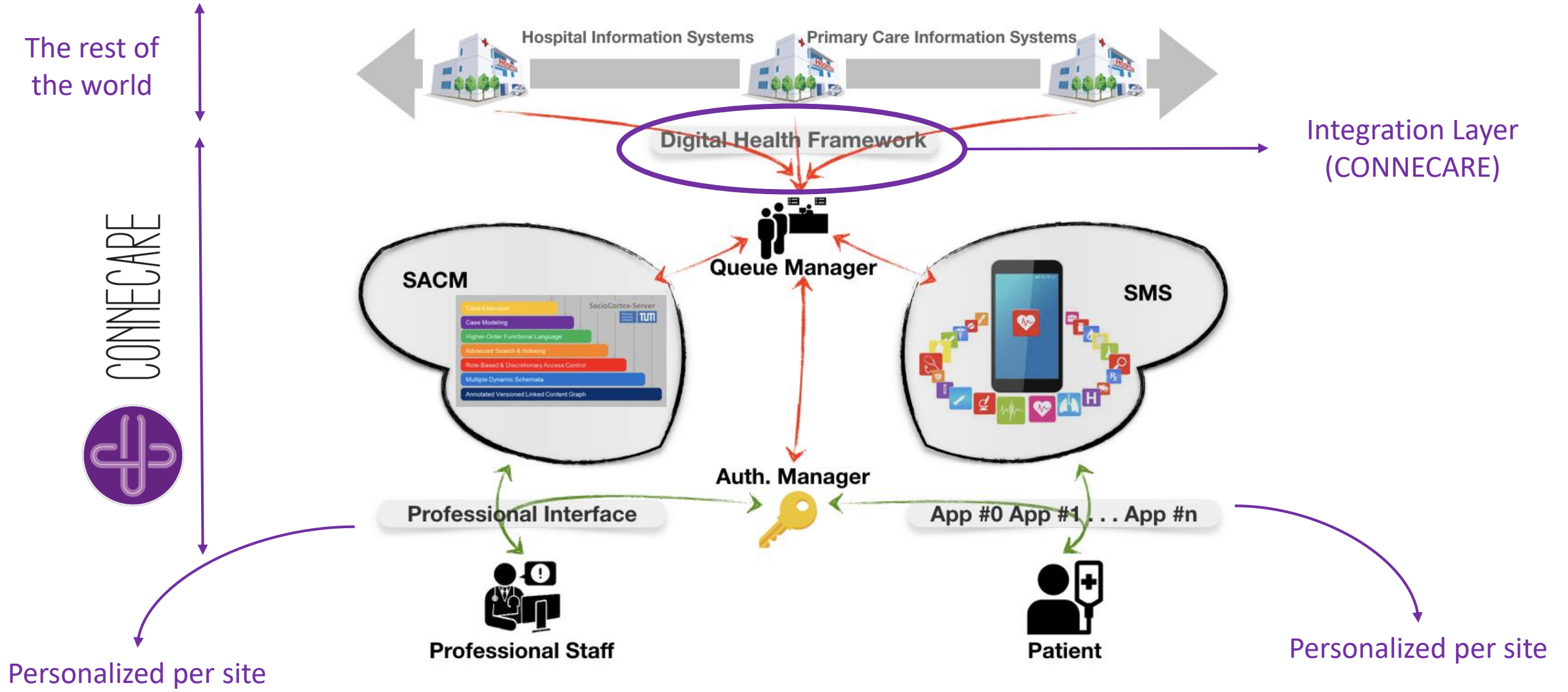






The **flexibility** of the integrated models will consequently help to improve real practice deployment of integrated care in those sites and will be able to bring practical insight to the **potential of transferability** of new methods and technologies to other regions in **Europe and beyond**





# Conclusion





- ❑ Some 70% of hospital beds in Europe are occupied by people with chronic long term conditions
- ❑ Integrated Care aims to reduce costs and improve patient outcomes by improving the integration of long term care for those chronically sick with more than one long term condition
- ❑ CONNECARE co-designs with professionals and patients, develops, implements, and evaluates a novel smart-adaptive integrated care system



CONNECARE

Thanks  
Bedankt תודה Gràcies  
Grazie Danke



**Eloisa Vargiu**

Manager of Integrated Continuous Care research line at  
EURECAT-Centro Tecnològic de Catalunya  
Barcelona Area, Spain | Research

[eloisa.vargiu@eurecat.org](mailto:eloisa.vargiu@eurecat.org)

eurecat

**IRB** *Leida*<sup>RS</sup>  
Institut de Recerca Biomèdica

 EWAVE



University Medical Center Groningen

Technical  
University  
of Munich

**TUM**

**ID** **BAPS**<sup>RS</sup>

HOSPITAL  
**Assuta**  
RAISING HEALTH STANDARDS



university of  
 groningen



**UNIMORE**  
UNIVERSITÀ DEGLI STUDI DI  
MODENA E REGGIO EMILIA

**adi** advanced  
digital  
institute



This project has received funding from the European Union's Horizon 2020 research and innovation programme under grant agreement No 689802