



INTEGRATED CARE IN THE EU

**ICT4LIFE FINAL CONFERENCE
BRUSSELS, 18 OCTOBER 2018**

PASCAL GAREL (HOPE)

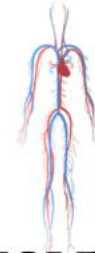
Membership Organization

- ▶ Created in 1966 in Rome
- ▶ 36 organizations: in the 28 EU Member States + Switzerland and Serbia, mirror of European diversity
- ▶ Covering almost 80% of hospital activity in the EU and almost all the research developed in hospitals but not only hospitals...

Disruptive Forces: The Basic Change in Health Care Conditions



AGING POPULATION,
FEWER CAREGIVERS



AN INCREASE IN
CHRONIC DISEASES



NEW HEALTH
TECHNOLOGY



INFORMATION
REVOLUTION



CONSCIOUS HEALTH
CONSUMER

New Technologies



Artificial
intelligence
and Big Data



Robot
Technology



Internet of
things, apps,
wearables &
sensors

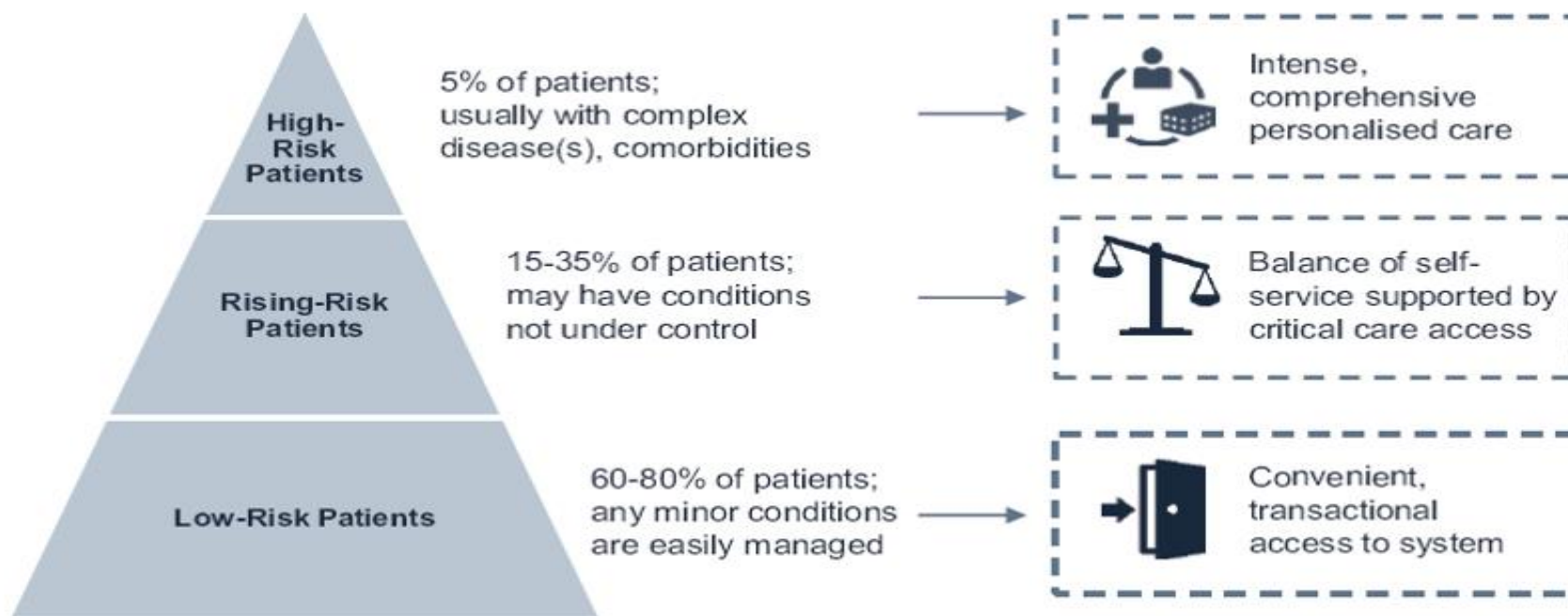


Precision
Medicine

Population Health

Strategies and Tactics Universal For Best Population Health Managers

Managing Three Types of Patient Demand

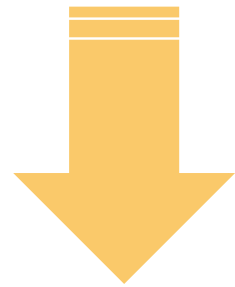


Organisational innovation

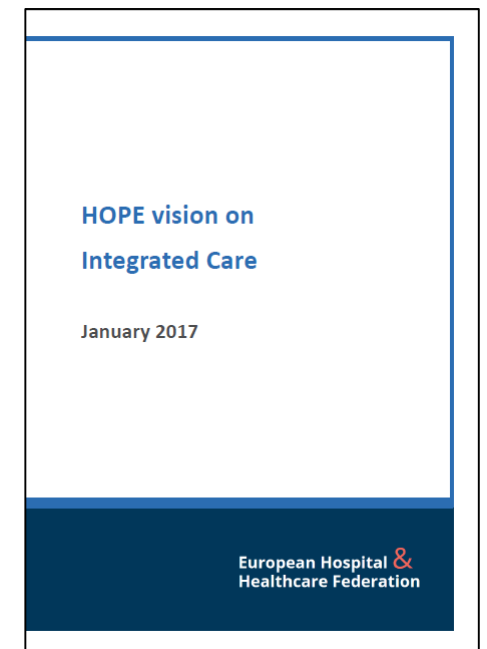
- ▶ Design challenges
- ▶ Outcome challenges: variations and unnecessary differences
- ▶ Integrating care in health and social

HOPE vision on integrated care

- ▶ Health and social care together
- ▶ Evidence still needed
- ▶ But things are moving



A Position Paper, a Study Tour, an Exchange Programme, ICT4Life, ...



Health and social care together

- ▶ Health systems and providers: the most complex and interdependent entities
- ▶ Continuity of care in health care
- ▶ Continuity of care with social care

Evidence still needed

- ▶ Various goals given to integrated care
- ▶ Shortage of robust evidence on economic impacts of integrated care
- ▶ New evidence coming from the Council health systems performance assessment and tender on integrated care

But things are moving

- ▶ Moving differently and not at the same pace
- ▶ Not a single solution or approach
- ▶ But need to bring all stakeholders to undertake the transformational change needed

Integration of care in practice

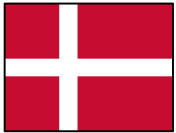
Provision of care closer to **patients' home**

Use of **ICT** to support patients and professionals

Involvement of **social care** and **community care**

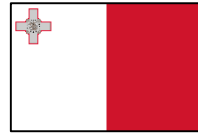
New roles and **new skills** for HC professionals

HOPE exchange programme examples



DENMARK

- ▶ Partnership between hospitals and municipalities
- ▶ Strengthening of primary care
- ▶ Empowerment of nurses role for acute care



MALTA

- ▶ Strengthening of primary care
- ▶ Shifting of some services to community care
- ▶ Empowerment of nurses role



FINLAND

- ▶ Introduction of mobile clinics, mobile dental care and home rehabilitation
- ▶ Empowerment of nurses role



POLAND

- ▶ Integration of healthcare organisations with community
- ▶ Partnership between hospitals and other institutions on the territory



THANK YOU.

PASCAL GAREL (HOPE)

SG@HOPE.BE

@euhospitals
www.hope.be